

## SP4 Achieved blood pressure of haemodialysis patients June 2009

Patients receiving RRT for ERF have a higher risk of cardiovascular morbidity and mortality than the general population.

Among individuals without renal disease hypertension is an important risk factor for developing cardiovascular disease.

In HD patients there is a complex relationship between blood pressure and mortality with both very high and very low blood pressure associated with mortality.

The UKRA set a target blood pressure of <140/90 pre-dialysis and <130/80 post-dialysis for all patients receiving HD in 2002.

It was recognised that this was based on weak evidence but it was in keeping with guidelines set by other international organisations such as KDOQI.

The 4th version of the UKRA guidelines published in 2007 gave no recommendation for target blood pressure.

It is recognised that in the absence of good evidence specific blood pressure targets are difficult to determine.

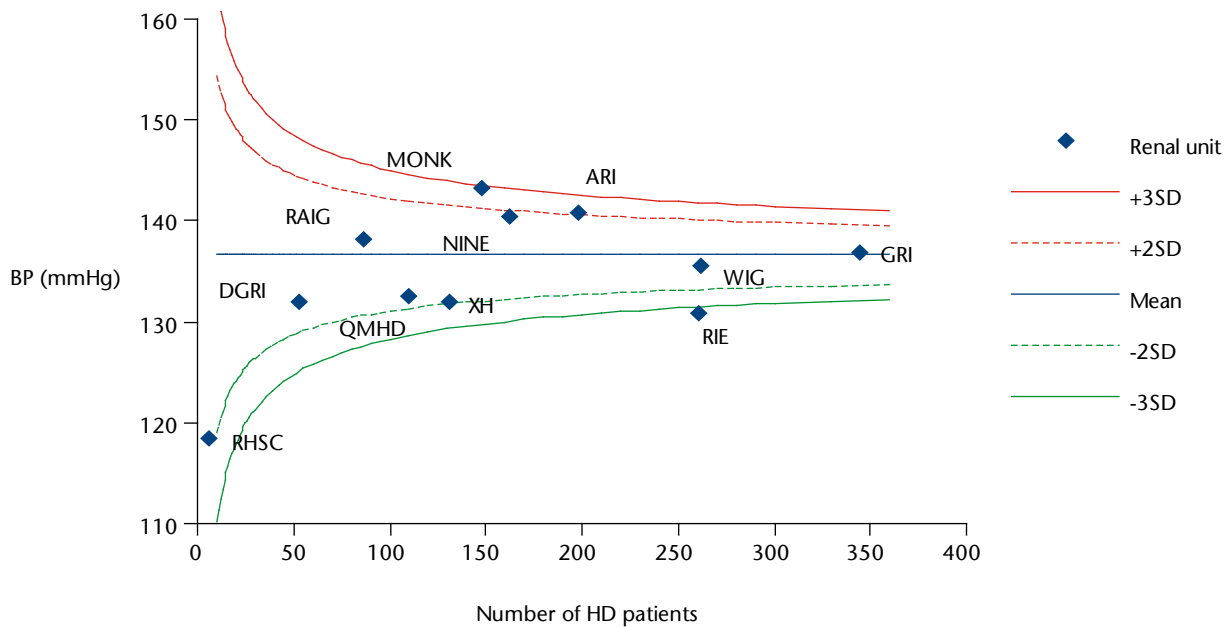
The collection of pre and post HD blood pressure was included in the June 2009 census.

All patients receiving hospital or home haemodialysis on 01 June 2009 were included in the census.

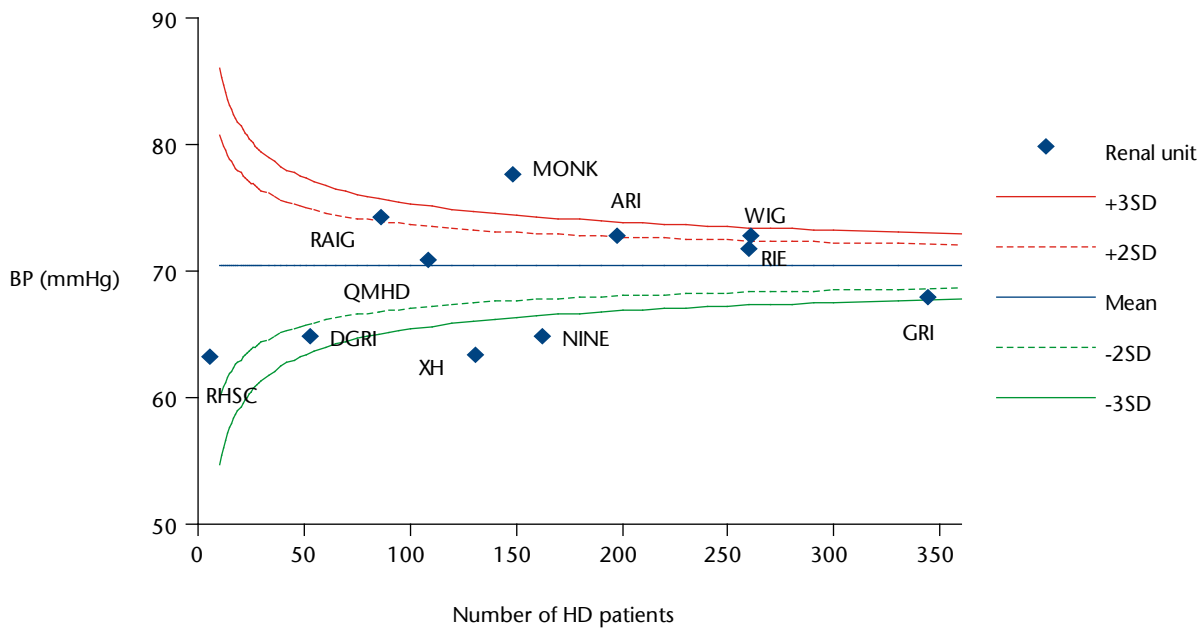
Blood pressure measurements available for 1758 (95.1%) of the 1848 patients.

SP4.1 Mean pre HD blood pressure by renal unit June 2009				
Renal unit	Number of HD patients	Mean systolic BP (mmHg)	Mean diastolic BP (mmHg)	% of patients with BP data
ARI	206	141	73	96.1
XH	143	132	63	91.6
DGRI	53	132	65	100.0
GRI	345	137	68	99.7
MONK	154	143	78	96.0
NINE	175	140	65	92.6
QMHD	122	133	71	89.3
RAIG	88	138	74	97.7
RHSC	6	119	63	100.0
RIE	275	131	72	94.6
WIG	281	136	73	92.9

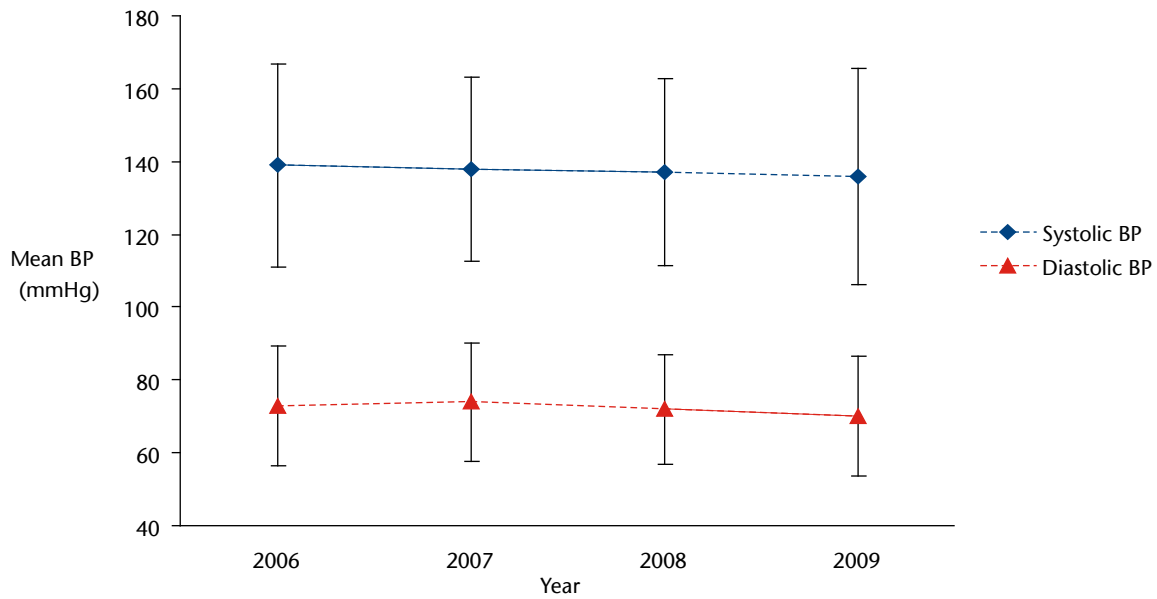
**SP4.2 Distribution of mean pre HD systolic blood pressure by renal unit June 2009**



**SP4.3 Distribution of mean pre HD diastolic blood pressure by renal unit June 2009**



**SP4.4 Mean pre HD blood pressure annual census results 2006-2009**



Results (mean and 2 SD) are for all HD patients in Scotland over the last 4 consecutive annual censuses.

Despite increasing uncertainty about blood pressure targets, mean blood pressure had fallen over the last four years from 139/73 to 137/70 mmHg.